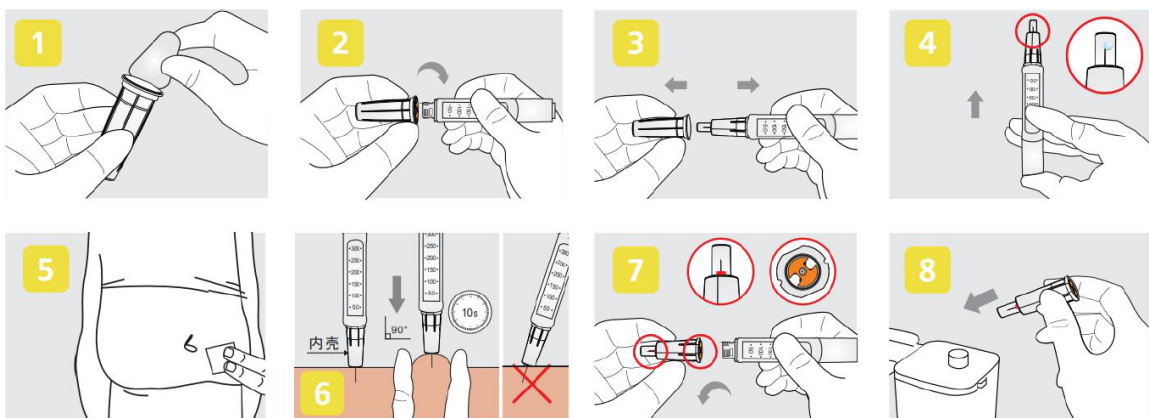


Pro-Shield Duo Safety Insulin Pen Needle

A universal screw fit insulin pen needle designed for safety to protect healthcare professionals and carers from needle stick injuries.



User Instructions



Step by Step Guide

Model	Gauge	Size	Colour
AMTL-3104DS	31G	4mm	Yellow
AMTL-3005DS	30G	5mm	Grey

Please clean and dry a injection site before commencing

1. Confirm the integrity of the single package of the product before use, and peel off the sealing film from the shield of the pen needle
2. Holding the shield, align the end of needle hub with the refill, and screw it clockwise on the injection pen
3. Gently remove the shield horizontally
4. Before each injection, adjust the dose of 2 units, put the needle tip upward, flick the injection pen to let the bubble float to the top, then press the injection button until the liquid is discharged from the needle tip. If there is no liquid comes up, please repeat the steps recommended in the instruction manual of injection pen. If the liquid still does not come up, replace the needle and repeat the above steps
5. Select the insulin drug dose on the injection pen according to the instruction manual of the injection pen
6. It is recommended to clean the injection site with alcohol pads. When using, pierce the needle vertically (90°) into the skin until the transparent protective cap is fully retracted, and the end face of the inner protective cap is in contact with the skin for injection. Hold down the injection button for at least 10 seconds and pull out the needle. Do not change direction while the needle is still in the body, as this may cause the needle to bend. Injection is complete
7. When the needle is pulled out of the skin, the protective cover rebounds and the red warning sign floats, indicating that the safety device has been activated and the needle cannot be used again. Grasp the needle, rotate counterclockwise, remove the needle, the orange piece rebounds, indicating that the safety device has been activated and the tail needle tip is protected
8. Dispose of the used pen needles in the sharps container